

[www.billabonghighjabalpur.com](http://www.billabonghighjabalpur.com)

# NEWSLETTER

INSIGHTS BY

ISSUE 1: APRIL 2025



**BILLABONG HIGH**  
INTERNATIONAL SCHOOL

*From the desk of the  
Principal*



# NEWSLETTER

ISSUE 1: APRIL 2025

Dear Parents, Students, and Educators,

As the doors of Billabong High International School swing open to a fresh academic year, I extend my heartfelt welcome to each of you. This year marks another step in our journey of excellence, innovation, and holistic learning. With our robust CBSE and Cambridge curricula, a global approach to education, and a commitment to nurturing young minds, we stand tall as a beacon of academic brilliance and character-building.

At Billabong, we believe that learning is not just about textbooks and exams—it's about curiosity, creativity, and confidence. From TED-Ed initiatives to Model United Nations representations and to transformative community outreach like the Natwara Village adoption, our students are exposed to an education that goes beyond the classroom.

As we embark on this new journey together, let's make 2025 a year of aspirations, achievements, and unforgettable experiences. Let's embrace challenges with enthusiasm and turn dreams into reality!

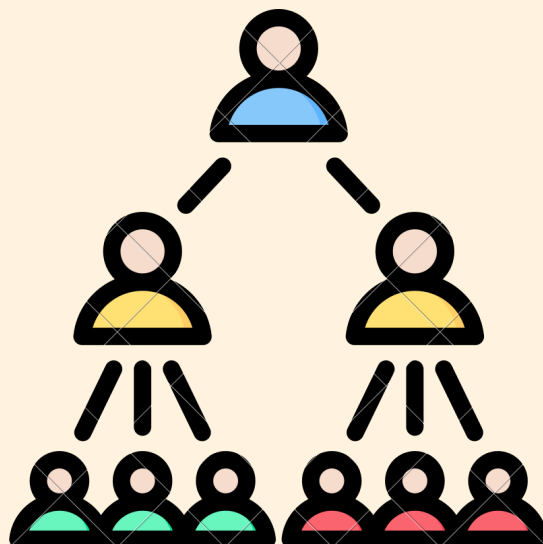
Looking forward to a fantastic year ahead!

—PRINCIPAL

# STRUCTURE & HIERARCHY

In today's dynamic educational landscape, maintaining clarity, transparency, and accessibility is paramount to ensuring a thriving and well-connected school community. This redefined framework has been meticulously designed to:

- ✓ **Streamline Communication:** Establish clear channels of interaction, making it easier for parents and students to connect with the right personnel efficiently.
- ✓ **Enhance Responsiveness:** Ensure quicker resolutions by reducing ambiguity in roles and responsibilities.
- ✓ **Promote Accountability:** Clearly define the chain of command, creating a transparent system where concerns and feedback are addressed promptly.
- ✓ **Strengthen Relationships:** Foster a collaborative environment where all stakeholders feel heard, valued, and respected.



# STRUCTURE AND HIERARCHY

## SCHOOL MANAGEMENT



**Ms. Arpita Malpani**

- Position: Chairperson
- Email: [chairperson@billabonghighjabalpur.com](mailto:chairperson@billabonghighjabalpur.com)
- Phone: 9425157818



**Mr. Pradeep Gangadharan**

- Position: CEO
- Email: [ceo@billabonghighjabalpur.com](mailto:ceo@billabonghighjabalpur.com)
- Phone: 7397765627

## PRINCIPAL



**Ms. Sayma Khan**

- Email: [principal@billabonghighjabalpur.com](mailto:principal@billabonghighjabalpur.com)
- Phone: 9752161877

# STRUCTURE AND HIERARCHY

## CAMBRIDGE COORDINATORS



**Ms. Deevyaa Mishra**  
(G1 to G5)

- Email: [divya.mishra@billaabonghighjabalpur.com](mailto:divya.mishra@billaabonghighjabalpur.com)
- Phone: 8962382724



**Ms. Cheryl Cubbins**  
(G6-G8)

- Email: [cheryl.cubbins@billaabonghighjabalpur.com](mailto:cheryl.cubbins@billaabonghighjabalpur.com)
- Phone: 9407823508



**Mr. Abhishek Tiwari**  
(IGCSE & A LEVEL)

- Email: [abhishek.tiwari@billaabonghighjabalpur.com](mailto:abhishek.tiwari@billaabonghighjabalpur.com)
- Phone: 7978451641



**Ms. Shalini Rautela**  
(Academic Coordinator)

- Email: [shalini.rautela@billaabonghighjabalpur.in](mailto:shalini.rautela@billaabonghighjabalpur.in)
- Phone: 8449627972

## CBSE COORDINATORS



**Ms. Sanskruti Rajput**  
(G1 & G2)

- Email: [sanskruti.rajput@billaabonghighjabalpur.com](mailto:sanskruti.rajput@billaabonghighjabalpur.com)
- Phone: 7470520545



**Ms. Jayanti Shrivastav**  
(G3 & G4)

- Email: [jayanti.shrivastav@billaabonghighjabalpur.com](mailto:jayanti.shrivastav@billaabonghighjabalpur.com)
- Phone: 9407823508



**Ms. Ankita Arora** (G5 & G6)

- Email: [ankita.arora@billaabonghighjabalpur.com](mailto:ankita.arora@billaabonghighjabalpur.com)
- Phone: 7978451641



**Ms. Prerna Dixit**  
(G7 & G8)

- Email: [prerna.dixit@billaabonghighjabalpur.com](mailto:prerna.dixit@billaabonghighjabalpur.com)
- Phone: 8449627972



**Ms. Moushumi Banerjee**  
(G9 & G10)

- Email: [moushumi.banerjee@billaabonghighjabalpur.com](mailto:moushumi.banerjee@billaabonghighjabalpur.com)
- Phone: 8962382724



**Mr. Anupam Jain** (G11 & G12)

- Email: [anupam.jain@billaabonghighjabalpur.com](mailto:anupam.jain@billaabonghighjabalpur.com)
- Phone: 8962382724



# STRUCTURE AND HIERARCHY

## COORDINATORS & ADMIN STAFF



**Ms. Gurpreet Verma**  
(ICT Coordinator)

- Email: [gurpreet.verma@billabonghighjabalpur.com](mailto:gurpreet.verma@billabonghighjabalpur.com)
- Phone: 9407823508



**Mr. Pawan Sahu**  
(Exam in-charge)

- Email: [pawan.sahu@billabonghighjabalpur.com](mailto:pawan.sahu@billabonghighjabalpur.com)
- Phone: 9977367672



**Ms. Janhavi Duggal**  
(Front Desk Officer)

- Email: [frontdesk@billabonghighjabalpur.com](mailto:frontdesk@billabonghighjabalpur.com)
- Phone: 8602815339



**Ms. Chitra Gavan**  
(Admission executive)

- Email: [admissions@billabonghighjabalpur.com](mailto:admissions@billabonghighjabalpur.com)
- Phone: 8963939333



**Mr. Prince Manihar**  
(Supervisor/transport)

- Email: [prince.manihar@billabonghighjabalpur.com](mailto:prince.manihar@billabonghighjabalpur.com)
- Phone: 7415474256



**Ms. Abha Sarkar**  
(Admin Executive)

- Email: [adminexecutive@billabonghighjabalpur.com](mailto:adminexecutive@billabonghighjabalpur.com)
- Phone: 9039005340



**Mr. Himanshu Dubey**  
(Accountant)

- Email: [accountant@billabonghighjabalpur.com](mailto:accountant@billabonghighjabalpur.com)
- Phone: 7987767337



**Mrs. Neetu Lodhi**  
(Samagra/apaar ID portal incharge)

- Email: [neetu.lodhi@billabonghighjabalpur.com](mailto:neetu.lodhi@billabonghighjabalpur.com)
- Phone: 7828462479

# HOW'S THE 1ST TERM

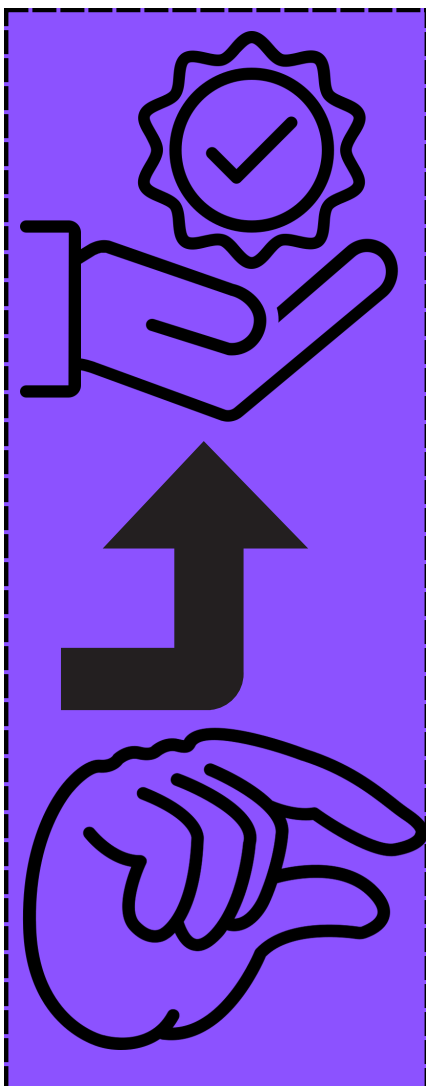
## CBSE

The CBSE curriculum at Billabong High International School has embraced Bloom's Taxonomy to enhance the learning experience. By focusing on the six hierarchical levels — students are encouraged to think critically and develop deeper comprehension.

- **Interactive Classrooms:** Lessons are designed to move beyond rote learning, incorporating application-based questions and analytical discussions.
- **Experiential Learning:** Hands-on activities and real-world applications help students synthesize concepts effectively.
- **Skill Development:** Emphasis on critical thinking, collaboration, and problem-solving skills, preparing students for future challenges.

## CAMBRIDGE

The Cambridge curriculum highlights quality over quantity, promoting in-depth understanding and practical application through dedicated learning spaces:



**Student Corner:** A platform for students to share their creative work, reflections, and achievements, fostering self-expression and confidence.

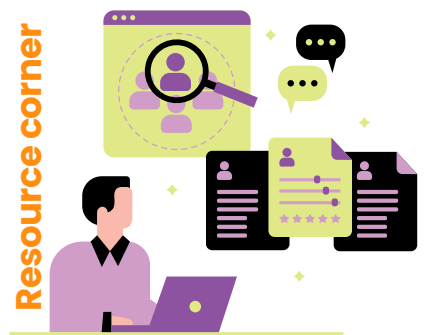
**Resource Corner:** Equipped with diverse materials, from reference books to digital tools, enhancing research and independent learning skills.



### Activity corner

**Activity Corner:** Engaging hands-on activities, projects, and interactive tasks that promote collaborative and experiential learning.

**Study Corner:** A dedicated space for self-paced learning, allowing students to revisit concepts and strengthen their grasp through personalized study methods.



### Study Corner



# ABOUT THE SCHOOL

## S.P.A & CO-CURRICULAR ACTIVITIES



In today's fast-paced and competitive world, education goes far beyond textbooks and classrooms. Sports and other extracurricular activities play a pivotal role in shaping well-rounded individuals, fostering skills and values that contribute to both personal and academic growth.



### ✓ 1. Physical and Mental Well-being:

Engaging in sports promotes physical fitness, improving strength, endurance, and overall health. It also enhances mental well-being by reducing stress, boosting mood, and improving concentration. Physical activity stimulates the release of endorphins, leading to a positive mindset and emotional balance.

### 🔵 2. Character Building and Discipline:

Sports and extracurricular activities teach students essential life skills, such as discipline, patience, and resilience. Through victories and defeats, they learn to handle success with humility and failure with grace, fostering emotional maturity and perseverance.

### 🟡 3. Teamwork and Collaboration:

Participating in group activities, whether on the field or in clubs, nurtures team spirit and cooperation. It encourages students to respect diverse perspectives, communicate effectively, and develop leadership qualities—skills that are invaluable in both personal and professional life.



# NEW INITIATIVES

## PRIMARY

### "Zero Period, Infinite Impact"

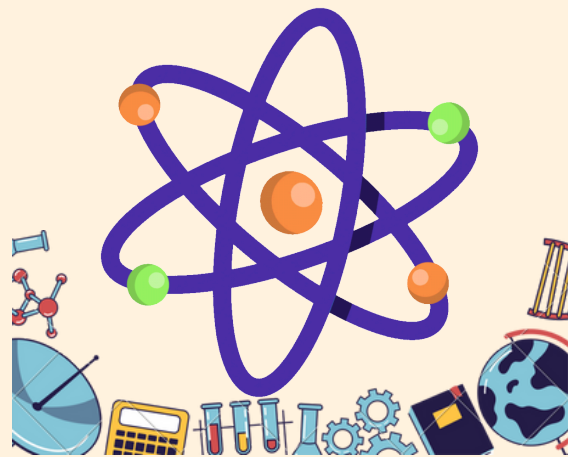


The LSRW framework has been introduced into the primary grades to strengthen foundational literacy skills:

- **Listening:** Interactive storytelling, audio lessons, and comprehension-based listening activities enhance students' ability to interpret and understand spoken language.
- **Speaking:** Role-playing, group discussions, and presentations develop communication skills and build confidence.
- **Reading:** Age-appropriate literature, guided reading sessions, and comprehension exercises promote fluency and comprehension.
- **Writing:** Creative writing tasks, journaling, and structured grammar exercises refine expression and written communication.

## Science Club

- **Innovative Experiments:** Students conduct engaging experiments that enhance their practical knowledge.
- **STEM Challenges:** Participation in STEM-based activities promotes creativity and problem-solving skills.
- **Guest Lectures:** Expert sessions offer insights into emerging scientific trends and discoveries.



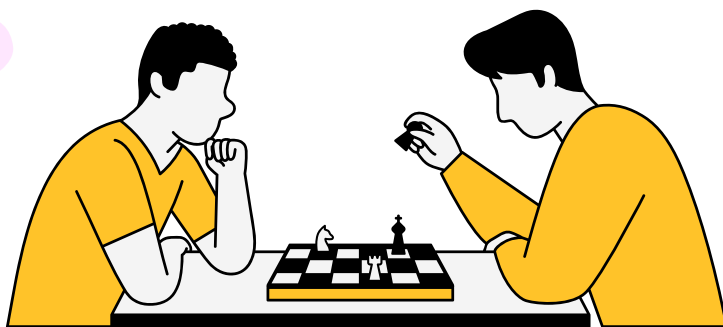
## MIDDLE



## Thriving Minds Club

- **Mindfulness Practices:** Breathing exercises and meditation to promote relaxation and focus.
- **Counseling and Support:** Group discussions and individual support to address emotional concerns.
- **Wellness Workshops:** Interactive sessions on stress management, self-care, and emotional intelligence.

# UPCOMING EVENTS & ACTIVITIES



13th April- IH Chess Tournament



23rd April- Character  
Potrayal



19th April- Debate & Elocution  
competition

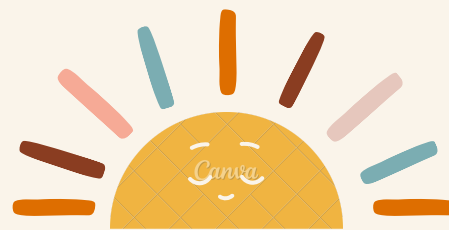


26th April-IH Swimming  
Competition



23rd April- Fable  
Re-telling

# GENERAL RULES



APRIL 2025



1. Reporting time – 7:40 a.m. ( main gate will close at 7:50 a.m. and no entry shall be allowed there after). Children miss out on assembly and special occasions and spa in the instance of late coming .Please avoid that.

Dispersal time – 2:10 p.m.

Note : keep it in view the safety of the students the private vehicles for the children coming on their own need to be parked outside the school gate. Only school buses and vans will be allowed to enter the premises.

2. On rainy days and unprecedented events like road blocks extra school authorities will give the required relaxation.

3. In case you are getting late due to some unavoidable circumstance or are coming late the next working day please call the school authorities and keep them informed in advance prior permission is mandatory.

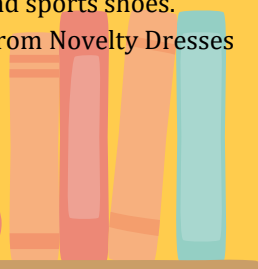
Note: Parents are always reminded to encourage pupils to be punctual and regular at school. These rules are in order to optimize the learning of the child and also to teach them the life skill of time management and discipline. Request parents to cooperate in this regard.

4. Uniform.

a) Monday, Wednesday, Friday-purple/yellow t-shirt with khaki pants, school socks and black school shoes.

b) Tuesday and Thursday – SPA dress ( house uniform ) with school socks and sports shoes.

c) Uniforms can be procured from Novelty Dresses and A to Z dresses.



5. Students should attend the school with proper haircut, trimmed nails and pleasant overall appearance. Use only black rubberbands to tie the hair of girls with neat hairstyles.

6. Do not wear or carry fancy and precious items to school. In case of theft of such things, the school shall not be able to provide any kind of assistance.

7. Books and notebooks to be carried as per time table provided to avoid excess burden of bag.

8. Prior information about leaves and short leaves should be given in writing through Almanac and EDUNEXT. For short leaves child can be pick the only during the break timings. Kindly check the time table before coming to pick the child.

9. Mess facility is compulsory. Payment for the same to be made to the accounts department. Contact school admin or raise your query through CONCERN SECTION in the Edunext in case of any query.

10. All the information related to academics and co-curricular activities will be available on school Edunext app only. Whatsapp groups will not continue.

11. 'Swimming costume' and other swimming essentials i.e. swimming cap and goggles to be sent when the students have swimming period, according to the time table.



12. Kindly fill the SPA form stating three different preferences from group A and B each.

13. On birthday student can distribute a dairy milk/kit kat/perk/munch chocolate only not more than 5/- each. No hampers are allowed to be distributed in schools.

14. All the pictures clicked during school hours for various activities are always posted.



CONTACT US

 [billabong\\_jabalpur](https://www.instagram.com/billabong_jabalpur)  
 [Bhis school.](https://www.facebook.com/Bhis.school)



9644406012, 9644406015



[info@billabonghighjabalpur.com](mailto:info@billabonghighjabalpur.com)  
[www.billabonghighjabalpur.com](http://www.billabonghighjabalpur.com)